

ANALYTICAL BALANCES

Laboratory | Industry | Food Industry

PROFESSIONAL MEASURING



2025

KERN Pictograms

CAL INT **Internal adjusting**
Quick setting up of the balance's accuracy with internal adjusting weight (motordriven)

CAL EXT **Adjusting program CAL**
For quick setting up of the balance's accuracy. External adjusting weight required

ET **EasyTouch**
Suitable for the connection, data transmission and control through PC or tablet

MEMORY **Memory**
Balance memory capacity, e.g. for internal data, weighing data, tare weights, PLU etc.

ALIBI **Alibi memory**
Secure, electronic archiving of weighing results, complying with the 2014/31/EU standard.

KUP **KERN Universal Port (KUP)**
allows the connection of external KUP interface adapters, e.g. RS-232, RS-485, SB, Bluetooth, WIFI, Analogue, Ethernet etc. for the exchange of data and control commands, without installation effort

RS 232 **RS-232 Data interface**
To connect the balance to a printer, PC or network

RS 485 **RS-485 Data interface**
To connect the balance to a printer, PC or other peripherals. Suitable for data transfer over large distances. Network in bus topology is possible

USB **USB Data interface**
To connect the balance to a printer, PC or other peripherals

BT **Bluetooth® Data interface**
To transfer data from the balance to a printer, PC or other peripherals

WIFI **WIFI Data interface**
To transfer data from the balance to a printer, PC or other peripherals

SWITCH **Control outputs**
(optocoupler, digital I/O)
To connect relays, signal lamps, valves, etc.

ANALOG **Analogue interface**
to connect a suitable peripheral device for analogue processing of the measurements

DUAL **Interface for second balance**
For direct connection of a second balance

LAN **Network interface**
For connecting the scale to an Ethernet network

KCP PROTOCOL **KERN Communication Protocol (KCP)**
It is a standardized interface command set for KERN balances and other instruments, which allows retrieving and controlling all relevant parameters and functions of the device. KERN devices featuring KCP are thus easily integrated with computers, industrial controllers and other digital systems

GLP INTERN **GLP/ISO log intern**
The balance displays weight, date and time, independent of a printer connection

GLP PRINTER **GLP/ISO log Printer**
With weight, date and time. Only with KERN printers.

PCS **Piece counting**
Reference quantities selectable. Display can be switched from piece to weight

RECIPE A **Recipe level A**
The weights of the recipe ingredients can be added together and the total weight of the recipe can be printed out

RECIPE B **Recipe level B**
Internal memory for complete recipes with name and target value of the recipe ingredients. User guidance through display

SUM A **Totalising level A**
The weights of similar items can be added together and the total can be printed out

PERCENT **Percentage determination**
Determining the deviation in % from the target value (100 %)

UNIT **Weighing units**
Can be switched to e.g. nonmetric units. See balance model. Please refer to KERN's website for more details

TOL **Weighing with tolerance range (Checkweighing)**
Upper and lower limiting can be programmed individually, e.g. for sorting and dosing. The process is supported by an audible or visual signal, see the relevant model

MOVE **Hold function**
(Animal weighing program)
When the weighing conditions are unstable, a stable weight is calculated as an average value

IP **Protection against dust and water splashes IPxx**
The type of protection is shown in the pictogram

UNDER **Suspended weighing**
Load support with hook on the underside of the balance

BATT **Battery operation**
Ready for battery operation. The battery type is specified for each device

ACCU **Rechargeable battery pack**
Rechargeable set

MULTI A **Universal plug-in power supply**
with universal input and optional input socket adapters for
A) EU, CH, GB
B) EU, CH, GB, US
C) EU, CH, GB, US, AUS

230 V **Plug-in power supply**
230V/50Hz in standard version for EU, CH. On request GB, USA or AUS version available

230 V **Integrated power supply unit**
Integrated in balance. 230V/50Hz standard EU. More standards e.g. GB, USA or AUS on request

DMS **Weighing principle Strain gauges**
Electrical resistor on an elastic deforming body

T-FORK **Weighing principle Tuning fork**
A resonating body is electromagnetically excited, causing it to oscillate

FORCE **Weighing principle Electromagnetic force compensation**
Coil inside a permanent magnet. For the most accurate weighings

SC TECH **Weighing principle Single cell technology**
Advanced version of the force compensation principle with the highest level of precision

M +3 DAYS **Conformity Assessment**
The time required for conformity assessment is specified in the pictogram

DAkkS +3 DAYS **DAkkS calibration possible (DKD)**
The time required for DAkkS calibration is shown in days in the pictogram

ISO +4 DAYS **Factory calibration (ISO)**
The time required for Factory calibration is shown in days in the pictogram

1 DAY **Package shipment**
The time required for internal shipping preparations is shown in days in the pictogram

2 DAYS **Pallet shipment**
The time required for internal shipping preparations is shown in days in the pictogram

KERN Models A-Z

572	31
A	
ABP	50-51
ABP-A	52
ABT-NM	48
ACS / ACJ	46-47
ADB / ADJ	43
ADS / ADT <small>NEW</small>	49
ALS-A / ALJ-A	44-45
B	
BFC	120-121
BIC	117
BID	118-119
BXC <small>NEW</small>	122
C	
CB Q1 / CB Q2 / CB P1	156
CCA	90-91
CCS	92-93
CDS	89
CE Hx	134
CFS	86
CH	165
CIB	83
CJ P / CJ X	159
CKE	87
CO Y1 / CO Y2 / CO Y5	158
CP P4 / CP Y4 / CP P1 / CP Y1 / CP P3	153
CP P2 / CP P7 / CP P8	154
CR Q1 / CR P1 / CR Y1	155
CT Q1 / CT P1 / CT P2	157
CPB	85
CXB/CXB-NM	84
D	
DAB	54
DBS	55
DE	102-103
DLB	56
DS	111
E	
ECB-N / ECE-N	59
EFS	11
EHA	15
EMB	12
EMB-V	13
EMS	14
EOB	100
EOC	104-105
EOE	99
EOS	101
EW-N / EG-N	34
EWJ	30

F	
FCB	61
FCE-N	60
FCF	67
FES / FEJ	40
FFN	72
FGE	66
FKB	62
FOB-LM	68
FOB-S / FOB-NS	69
FOB / FOB-NL	70
FXN / FXN-M	73

H	
HCB	167
HCD	169
HCN	168
HDB-N / HDB-XL	166
HFA	170
HFC	171
HFD	172-173
HFM	174

I	
IFB	110
IFC	108-109
IFS	88
IOC	106-107
IXC	112-113

K	
KBP-V20 IP65	148
KDP	135
KFA-V20	150
KFB-TM	145
KFC-TM	146
KFD-V20	149
KFD-V40 IP68	151
KFN-TM	145
KFP-V20 IP65	148
KFP-V20 IP67	149
KFP-V30	150
KFP-V40 IP68	151
KFS-TM	144
KFU-V20	150
KFU-V30	150
KGP	132
KIB-TM	145
KIP-V20M	149
KXC-TM	147
KXP-V20 IP65	148

N	
NFC <small>NEW</small>	129
NIB	128
NXC <small>NEW</small>	130

P	
PBJ / PBS	37
PCB	26-27
PCD	24
PCJ	28-29
PDS / PDT	38-39
PEJ / PES	36
PFB	25
PLJ / PLS	32
PNS / PNJ	33
PWS	35

R	
RIB	78
RPB	79

S	
SCD-4.0	179
SCD-4.0-PRO	180
SFB / SFB-H	76
SFE	114
SXC	74-75

T	
TGC	9
TGD	9

U	
UFA	123
UFC <small>NEW</small>	126
UIB	124
UID	125
UXC <small>NEW</small>	127

V	
VHB	161

W	
WTB	71

Y	
YKV	133
YRO-01 / -02 / -03	185



KERN Quick-Finder

How I quickly find the product I am looking for

Ahead of each product group allows you to base the search for a certain target group on weighing data you need such as readout, weighing capacity and main features for each model.

And it's as simple as that – find the product you want in 2 steps:

1. Go to the product group index on page 3
2. Pick the appropriate product group and find the product you want using the Quick-Finder



The price leader in analytical balances, with internal or external adjustment

Features

- KERN ADJ: Automatic internal adjustment in the case of a change in temperature ≥ 2 °C or time-controlled every 3 h, guarantees high degree of accuracy and makes the balance independent of its location of use
- KERN ADB: Adjusting program CAL for quick setting of the balance accuracy, external test weights at an additional price, see *Test Weights*
- Glass draught shield with 3 sliding doors for easy access to the items being weighed standard
- **1** ADB 600-C3/ADJ 600-C3: Compact, space-saving carat balances with a readout of 0.001 ct and a weighing range of 600 ct. The high level of accuracy saves hard cash wherever you are weighing valuable precious stones
- Level indicator and levelling feet for precise levelling of the scale, fitted as standard, to give the most accurate weighing result
- Simple and convenient 6-key operation

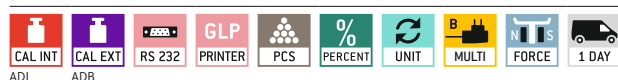
Technical data

- Large backlit LCD display, Digit height 16 mm
- Dimensions weighing surface, stainless steel, \varnothing 90 mm
- Weighing space W×D×H
KERN ADB-C/ADJ-C: 170×160×110 mm
KERN ADB/ADJ: 170×160×205 mm
- Permissible ambient temperature 10 °C/30 °C

Accessories

- **2** Set for density determination of liquids and solids with density $\leq/\geq 1$, KERN YDB-03, **€ 380,-**
- **3** Ioniser to neutralise electrostatic charge, KERN YBI-01A, **€ 950,-**
- **4** Gemstones plate, aluminium with practical spout, W×D×H 130×80×30 mm, KERN AEJ-A05, **€ 43,-**
- **5** Weighing table to absorb vibrations and oscillations, which would otherwise distort the weighing result, KERN YPS-03, **€ 990,-**
- Minimum weight of sample, depending on the required process accuracy, only in combination with a DAkkS calibration certificate, KERN 969-103, **€ 10,-**
- Equipment qualification: compliant qualification concept with Installation and Operating Qualification (IQ, OQ), for details see page 222
- Further details, plenty of further accessories and suitable printers see *Accessories*

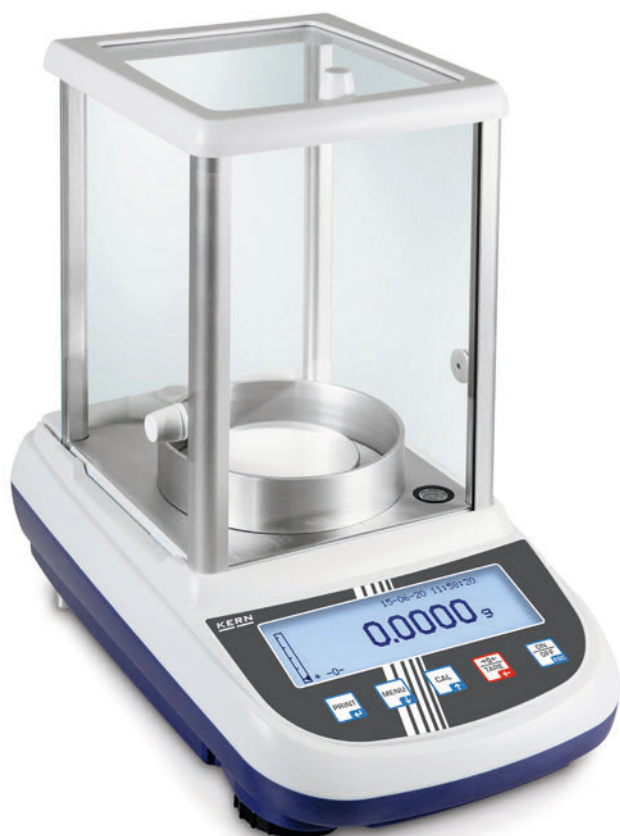
STANDARD



OPTION

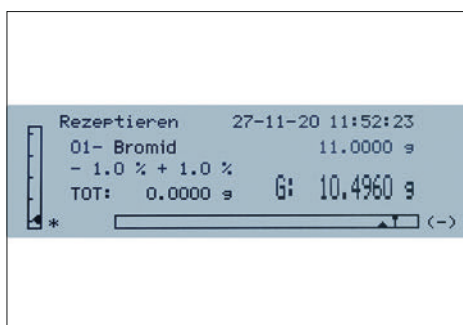


Model	Weighing capacity [Max]	Readability [d]	Reproducibility	Linearity	Overall dimensions W×D×H mm	Net weight kg	Price excl. of VAT ex works €	Options	
								DAkkS KERN	DAkkS Calibr. Certificate €
KERN	g	mg	mg	mg					
ADB 100-4	120	0,1	0,2	± 0,4	230×310×330	4,4	740,-	963-101	200,-
ADB 200-4	220	0,1	0,2	± 0,4	230×310×330	4,4	820,-	963-101	200,-
ADB 600-C3	600 ct	0,001 ct	0,002 ct	± 0,004 ct	230×310×210	3,8	720,-	963-101	200,-
ADJ 100-4	120	0,1	0,2	± 0,4	230×310×330	5,0	880,-	963-101	200,-
ADJ 200-4	220	0,1	0,2	± 0,4	230×310×330	5,0	960,-	963-101	200,-
ADJ 600-C3	600 ct	0,001 ct	0,002 ct	± 0,004 ct	230×310×210	4,6	860,-	963-101	200,-



KERN ALJ 200-5DA with optional ioniser **2**, see *Accessories*. High-precision semi-micro analytical balance. Thanks to its high level of precision, it is ideal for calibrating pipettes
Note: To prevent evaporation we recommend economical capillary tubes (see standard 8655)

Analytical balances with a large weighing range, graphics display and user-friendly recipe weighing function – also as single-range semi-micro balance with unbelievably high resolution



Convenient recipe-weighing with the recipe database, up to 99 recipes can be stored, each with up to 20 recipe ingredients with name and target value



Clear printout with date and time. In addition, the components of the mixture are numbered automatically and printed out with the name and weight



GLP/ISO record keeping: professional, detailed GLP Protocol, so that the balance is completely compliant with the relevant standard requirements in accordance with ISO, GLP and GMP



Features

- ALJ 210-5A: Semi-micro model with just one weighing range with unbelievably high resolution. **2** Particularly advantageous: the ioniser KERN ALJ-A03 for neutralising electrostatic charge is already fitted as standard
- Rapid working thanks to the graphics display and user-friendly, clear user guidance in German, English, French, Italian, Spanish and Portuguese
- KERN ALJ: Automatic internal adjustment, guarantees high degree of accuracy and makes the balance independent of its location of use
- KERN ALS: Adjusting program CAL for quick setting of the balance accuracy using an external test weight at an additional price, see *Test Weights*
- Short stabilisation time: steady weight values within approx. 4 s (Models with [d] = 0,1 mg) 10 s; 6 s (Models with [d] = 0,01 | 0,1 mg) under laboratory conditions
- Weighing with tolerance range: a visual and audible signal helps with portioning, dispensing or grading
- Dosage aid: High stability mode and other filter settings can be selected
- Internal memory for complete recipes with name and target value of the recipe ingredients
- Ergonomically optimised keypad for left and righthanded users
- Large glass draught shield with 3 sliding doors for easy access to the items being weighed. weighing space W×D×H 160×170×225 mm
- Compact size
- Protective working cover included with delivery

Technical data

- Backlit LCD graphic display, digit height 15 mm
- Dimensions weighing surface, stainless steel, Ø 80 mm
- Overall dimensions W×D×H 210×340×330 mm
- Permissible ambient temperature 5 °C/35 °C

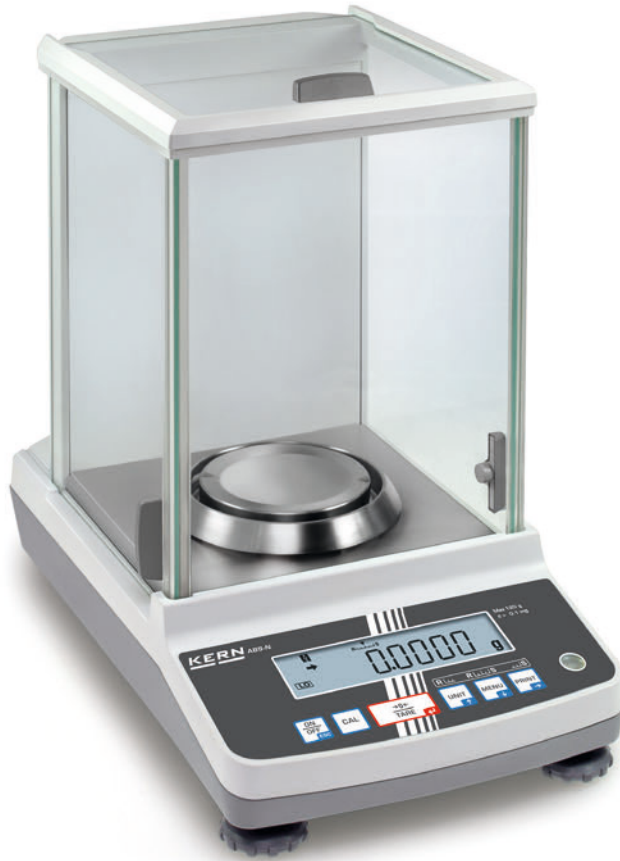
Accessories

- Protective working cover, scope of delivery 5 items, KERN ALJ-A01S05, **€ 52,-**
- Protective dust cover, KERN ABS-A08, **€ 32,-**
- **1** Evaporation trap, minimises faults through evaporation when using pipettes for small volumes of 10 µl to 10 ml, KERN ALJ-A02, **€ 700,-**
- **2** Draught shield rear panel with integrated ioniser to neutralise electrostatic charge. Particularly convenient handling as you no longer need a separate device. Simply enable the ionizer fan at the push of a button. Is fitted in place of the existing glass rear panel of the draught shield. Please order at the time you order your balance, the scope of delivery is the rear panel, ionizer, Universal plug-in power supply. Factory Option, KERN ALJ-A03, **€ 600,-**
- **3** Set for density determination of liquids and solids with density ≤/≥ 1, the density is indicated directly on the display, KERN YDB-03, **€ 380,-**
- Weighing table to absorb vibrations and oscillations, which would otherwise distort the weighing result, KERN YPS-03, **€ 990,-**
- Equipment qualification: compliant qualification concept with Installation and Operating Qualification (IQ, OQ), for details see page 222
- Further details, plenty of further accessories and suitable printers see *Accessories*

STANDARD OPTION

CAL INT	CAL EXT	RS 232	GLP INTERN	PCS	RECIPE	PERCENT	UNIT	TOL	MOVE	MULTI	FORCE	1 DAY	DAkKS
ALJ	ALS												+3 DAYS

Model	Weighing capacity [Max] g	Readability [d] mg	Reproducibility mg	Linearity mg	Net weight kg	Price excl. of VAT ex works €	Options	
							DAkKS KERN	Calibr. Certificate €
KERN								
ALS 160-4A	160	0,1	0,1	± 0,3	7	1370,-	963-101	200,-
ALS 250-4A	250	0,1	0,1	± 0,3	7	1400,-	963-101	200,-
ALJ 210-5A	210	0,01	0,05	± 0,1	6	3250,-	963-101	200,-
ALJ 160-4A	160	0,1	0,1	± 0,3	7	1420,-	963-101	200,-
ALJ 250-4A	250	0,1	0,1	± 0,3	7	1450,-	963-101	200,-
ALJ 310-4A	310	0,1	0,1	± 0,3	7	1500,-	963-101	200,-
ALJ 500-4A	510	0,1	0,2	± 0,4	7	2200,-	963-101	200,-
Multi-range balance, with increasing load it switches automatically to the next largest weighing range [Max] and readout [d] and when the load is fully removed, the balance switches back to the lower range								
ALJ 200-5DA	82 220	0,01 0,1	0,04 0,1	± 0,1 0,2	7	2250,-	963-101	200,-



The bestseller in analytical balances, with high-quality single-cell weighing system, verification optional



Single-cell advanced technology:

- Fully automatic manufactured weighing cell from one piece of material
- Stable temperature behaviour
- Short stabilisation time: steady weight values within approx. 3 s under laboratory conditions
- Shock proof construction
- High corner load performance



USB data interfaces and RS-232 for transferring weighing data to the PC, tablet, printer or USB



Features

- KERN ACJ: Automatic internal adjustment in the case of a change in temperature $\geq 2\text{ }^{\circ}\text{C}$ or time-controlled every 4 h, guarantees high degree of accuracy and makes the balance independent of its location of use
- KERN ACS: Adjusting program CAL for quick setting of the balance accuracy, external test weights at an additional price, see *Test Weights*
- Dosage aid: High stability mode and other filter settings can be selected
- Simple recipe weighing and documenting with a combined tare/print function. In addition, the ingredients for the recipe are numbered automatically and printed out with their corresponding number and nominal weight
- Automatic data output to the PC/printer each time the balance is steady
- Identification number: 4 digits, printed on calibration protocol freely programmable
- Protective working cover included with delivery

Technical data

- Large LCD display, digit height 14 mm
- Dimensions weighing surface, stainless steel, $\varnothing 91\text{ mm}$
- weighing space WxDxH 174x162x227 mm
- Overall dimensions WxDxH 213x333x338 mm
- Net weight approx. 7 kg
- Permissible ambient temperature $10\text{ }^{\circ}\text{C}/30\text{ }^{\circ}\text{C}$

Accessories

- Protective working cover, scope of delivery 5 items, KERN ACS-A02S05, **€ 52,-**
- **1** Set for density determination of liquids and solids with density $\leq/\geq 1$, the density is indicated directly on the display, KERN YDB-03, **€ 380,-**
- **2** Ioniser to neutralise electrostatic charge, KERN YBI-01A, **€ 950,-**
- **3** Weighing table to absorb vibrations and oscillations, which would otherwise distort the weighing result, KERN YPS-03, **€ 990,-**
- Minimum weight of sample, depending on the required process accuracy, only in combination with a DAkkS calibration certificate, KERN 969-103, **€ 10,-**
- Equipment qualification: compliant qualification concept with Installation and Operating Qualification (IQ, OQ), for details see page 222
- Further details, plenty of further accessories and suitable printers see *Accessories*

STANDARD

													OPTION	FACTORY
CAL INT	CAL EXT	RS 232	USB	GLP	PCS	RECIPE	PERCENT	UNIT	TOL	MULTI	SC TECH	1 DAY	DAkkS	M
ACJ	ACS												+3 DAYS	+3 DAYS
														ACJ

Model	Weighing capacity [Max]	Readability	Verification value	Minimal load	Reproducibility	Linearity	Price excl. of VAT ex works €	Options			
								Verification	DAkkS Calibr.	Certificate	
KERN	g	[d] mg	[e] mg	[Min] mg	mg	mg	€	M KERN	€	DAkkS KERN	€
ACS 80-4	82	0,1	-	-	0,2	$\pm 0,3$	1230,-	-	-	963-101	200,-
ACS 100-4	120	0,1	-	-	0,2	$\pm 0,3$	1330,-	-	-	963-101	200,-
ACS 200-4	220	0,1	-	-	0,2	$\pm 0,3$	1430,-	-	-	963-101	200,-
ACS 300-4	320	0,1	-	-	0,2	$\pm 0,3$	1630,-	-	-	963-101	200,-

Note: For devices that require verification (conformity assessment according to NAWI 2014/31/EU), please include the verification when placing your order. The initial verification is not possible after delivery. Please inform the full address of the location of use for the initial verification.

Model	Weighing capacity	Readability	Verification value	Minimal load	Reproducibility	Linearity	Price excl. of VAT ex works €	Verification	DAkkS Calibr.	Certificate	
KERN	g	[d] mg	[e] mg	[Min] mg	mg	mg	€	€	€	€	
ACJ 80-4M	82	0,1	1	10	0,2	$\pm 0,3$	1370,-	965-201	150,-	963-101	200,-
ACJ 100-4M	120	0,1	1	10	0,2	$\pm 0,3$	1430,-	965-201	150,-	963-101	200,-
ACJ 200-4M	220	0,1	1	10	0,2	$\pm 0,3$	1530,-	965-201	150,-	963-101	200,-
ACJ 300-4M	320	0,1	1	10	0,2	$\pm 0,3$	1730,-	965-201	150,-	963-101	200,-



4

The premium model with single-cell weighing system

- 4** Single-cell advanced technology:
- Fully automatic manufactured weighing cell from one piece of material
 - Stable temperature behaviour
 - Short stabilisation time: steady weight values within approx. 4 s (models with [d] = 0,1 mg), approx. 10 s (models with [d] = 0,01 mg) under laboratory conditions
 - Shock proof construction
 - High corner load performance

Features

- Automatic internal adjustment in the case of a change in temperature $\geq 0,5\text{ }^{\circ}\text{C}$ or timecontrolled every 4 h, guarantees high degree of accuracy and makes the balance independent of its location of use
- Dosage aid: High stability mode and other filter settings can be selected
- Simple recipe weighing and documenting with a combined tare/print function. The ingredients for the recipe are automatically numbered and printed with weight value
- Identification number: 4 digits, printed on calibration protocol freely programmable
- Printout of a GLP-compliant calibration report conveniently at the touch of a button
- Automatic data output to the PC/printer each time the balance is steady
- Large glass draught shield with 3 sliding doors for easy access to the items being weighed.
- Protective working cover included with delivery

Technical data

- Large LCD display, digit height 14 mm
- Dimensions weighing surface, stainless steel, $\varnothing 80\text{ mm}$
- weighing space WxDxH 168x172x223 mm
- Overall dimensions WxDxH 217x356x338 mm
- Net weight approx. 8 kg
- Permissible ambient temperature $10\text{ }^{\circ}\text{C}/30\text{ }^{\circ}\text{C}$

Accessories

- Protective working cover, scope of delivery 5 items, KERN ABT-A02S05, **€ 52,-**
- **1** Set for density determination of liquids and solids with density $\leq/\geq 1$, the density is indicated directly on the display, KERN YDB-03, **€ 380,-**
- **2** Ioniser to neutralise electrostatic charge, KERN YBI-01A, **€ 950,-**
- **3** Weighing table to absorb vibrations and oscillations, which would otherwise distort the weighing result, KERN YPS-03, **€ 990,-**
- Minimum weight of sample, depending on the required process accuracy, only in combination with a DAkkS calibration certificate, KERN 969-103, **€ 10,-**
- Equipment qualification: compliant qualification concept with Installation and Operating Qualification (IQ, OQ), for details see page 222
- Further details, plenty of further accessories and suitable printers see *Accessories*

STANDARD

CAL INT | RS 232 | GLP | INTERN | PCS | RECIPE | PERCENT | UNIT | UNDER | MULTI | SC TECH | 1 DAY

OPTION

DAkkS +3 DAYS

FACTORY

M +3 DAYS

Model	Weighing capacity [Max]	Readability [d]	Verification value [e]	Minimal load [Min]	Reproducibility	Linearity	Price excl. of VAT ex works €	Options				
								Verification	€	DAkkS Calibr. Certificate	€	
KERN	g	mg	mg	mg	mg	mg		M KERN		DAkkS KERN		
ABT 100-5NM	101	0,01	1	1	0,05	$\pm 0,15$	2500,-	965-201**	150,-	963-101	200,-	
ABT 120-4NM*	120	0,1	1	10	0,1	$\pm 0,2$	1900,-	965-201**	150,-	963-101	200,-	
ABT 220-4NM*	220	0,1	1	10	0,1	$\pm 0,2$	2300,-	965-201**	150,-	963-101	200,-	
ABT 320-4NM*	320	0,1	1	10	0,15	$\pm 0,3$	2600,-	965-201**	150,-	963-101	200,-	

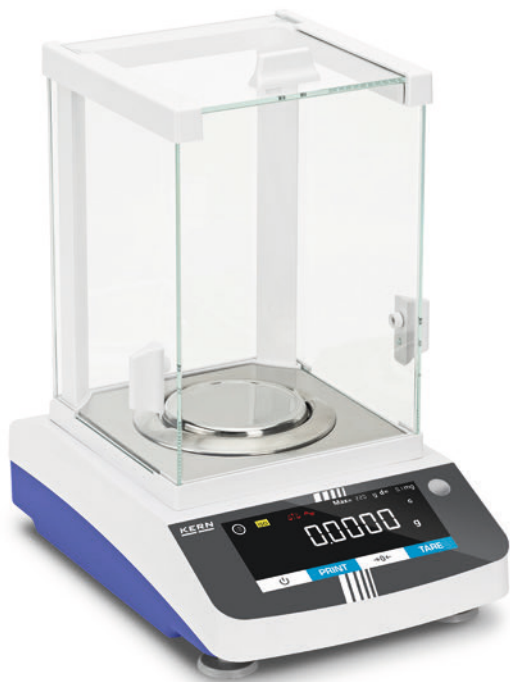
Multi-range balance, with increasing load it switches automatically to the next largest weighing range [Max] and readout [d] and when the load is fully removed, the balance switches back to the lower range

ABT 120-5DNM	42 120	0,01 0,1	1 1	1	0,02 0,1	$\pm 0,03 0,2$	2550,-	965-201**	150,-	963-101	200,-
ABT 220-5DNM	82 220	0,01 0,1	1 1	1	0,05 0,1	$\pm 0,1 0,2$	2650,-	965-201**	150,-	963-101	200,-

Note: For devices that require verification (conformity assessment according to NAWI 2014/31/EU), please include the verification when placing your order.

The initial verification is not possible after delivery. Please inform the full address of the location of use for the initial verification.

1 *ONLY WHILE STOCKS LAST **Conformity assessment only possible until 18/06/2025



NEW



4

Analytical balance with flexible functionality and touch display

Features

- The wide range of functions of this range of analytical balances means that they qualify for use in the pharmaceutical industry as well as other fields. These include, for example, the statistical function, weighing with tolerance range, counting function, percentage weighing, totalizing function and many more
- 1** Modern touch display with convenient operation enables you to, for example, switch the units or start adjustment straight from the display
- Draught shield standard
- Specialised functions, such as the statistical function make it easier to use efficiently in industry and the laboratory
- GLP/ISO record keeping with date, time and identification number of balance adjustment or weighing process

- Assists in data integrity in accordance with U.S. FDA 21 Part 11 (for example weighing result, sample ID, user name, scales ID, ...)
- Data query and remote control of the balance using a computer or CRM/ERP systems using the KERN Communication Protocol
- RS 232 data interface and USB (Device) for the transfer of weighing data
- Menu language EN

Technical data

- Backlit LCD display, digit height 20 mm
- Dimensions weighing surface, stainless steel, \varnothing 90 mm
- Overall dimensions W×D×H 207×318×360 mm
- Net weight approx. 6 kg
- Permissible ambient temperature 15 °C/25 °C

Accessories

- Protective dust cover, KERN ABS-A08, **€ 32,-**
- Weighing table to absorb vibrations and oscillations, which would otherwise distort the weighing result, KERN YPS-03, **€ 990,-**
- Antivibration plate
400×450×60 mm, KERN YPS-04, **€ 760,-**
565×450×60 mm, KERN YPS-05, **€ 980,-**
- Ioniser to neutralise electrostatic charge, KERN ABP-A01, **€ 1990,-**
- Equipment qualification: compliant qualification concept with Installation and Operating Qualification (IQ, OQ), for details see page 222
- Further details, plenty of further accessories and suitable printers see *Accessories*

The main scope of applications is:

- Laboratories
- Pharmaceutical industry
- Chemical industry
- Food industry
- Plastics industry
- Quality laboratories

STANDARD



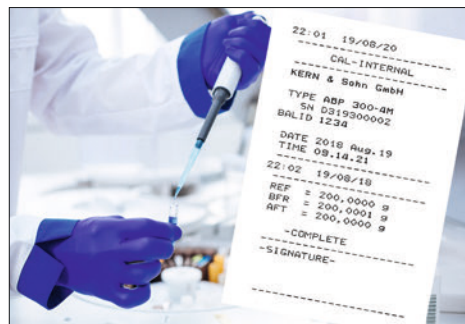
OPTION



Model	Weighing capacity [Max] g	Readability [d] mg	Reproducibility mg	Linearity mg	Price excl. of VAT ex works €	Options	
						DAKKS KERN	Calibr. Certificate €
Models with external adjustment							
ADS 100-4	120	0,1	0,3	± 0,3	1550,-	963-101	200,-
ADS 200-4	220	0,1	0,3	± 0,3	1750,-	963-101	200,-
ADS 300-4	320	0,1	0,4	± 0,4	1950,-	963-101	200,-
Models with internal adjustment							
ADT 100-4	120	0,1	0,3	± 0,3	1700,-	963-101	200,-
ADT 200-4	220	0,1	0,3	± 0,3	1900,-	963-101	200,-
ADT 300-4	320	0,1	0,4	± 0,4	2100,-	963-101	200,-



Premium analytical balance with the latest Single-Cell Generation for extremely rapid, stable weighing results



1 The internal draught shield minimises the effect of currents of air in the weighing chamber and therefore significantly improves the stabilisation time and repeatability, see *Accessories*

2 Extremely fast ionization process, thanks to the latest generation of KERN ionization technology to neutralise electrostatic charge, see *Accessories*

GLP/ISO record keeping: professional, detailed GLP Protocol, so that the balance is completely compliant with the relevant standard requirements in accordance with ISO, GLP and GMP

Features

- Large glass draught shield with 3 sliding doors for easy access to the items being weighed
- Navigation pad for quick navigating through the menus
- Automatic internal adjustment in the case of a change in temperature ≥ 1 °C or timecontrolled every 4 h, guarantees high degree of accuracy and makes the balance independent of its location of use
- The minimum weight of sample can be manually stored in the device or automatically calculated. For weighings below this value, the balance issues a warning message
- Dosage aid: High stability mode and other filter settings can be selected
- Simple recipe weighing and documenting with a combined tare/print function. In addition, the ingredients for the recipe are numbered automatically and printed out with their corresponding number and nominal weight
- Individual settings can be stored for up to 10 users: User name/number, password, menu language, user profile. Settings can be recalled using the barcode. Guest mode for users who are not logged in, specific permissions (e.g. for adjustment, recipe changes) only for authorised users
- RS-232 data interfaces and USB (device) for transferring weighing data and USB (host) to connect a USB keyboard
- U.S. FDA 21 Part 11: assists in data integrity in accordance with U.S. FDA 21 Part 11 (for example weighing result, sample ID, user name, scales ID, ...)
- Menu languages DE, EN
- Automatic data output to the PC/printer each time the balance is steady

- Standard for models with [d] 0,01 mg: Multi-function weighing plate included with delivery, minimises the effect of currents of air in the weighing chamber and therefore significantly improves the stabilisation time and repeatability. In addition samples, sample paper, PCR containers, micro centrifuge tubes and many other items which protrude can be easily fixed in place and weighed easily
- ABP 200-5M: Erlenmeyer flask holder included with delivery
- Protective working cover included with delivery

Technical data

- Luminescent OLED display, digit height 12 mm bright with high contrast, for easy reading of the weight, even in poor lighting conditions
- Dimensions weighing surface, stainless steel, \varnothing 91 mm
- Overall dimensions WxDxH 220x370x350 mm
- Net weight approx. 8 kg
- Permissible ambient temperature 10 °C/30 °C

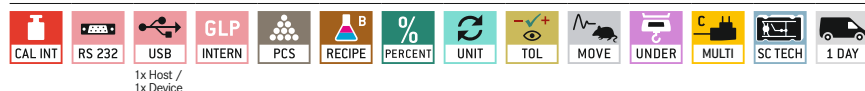
Accessories

- Protective working cover, scope of delivery 5 items, KERN YBA-A06S05, **€ 52,-**
- Set for density determination of liquids and solids with density $\leq/\geq 1$, the density is indicated directly on the display, KERN YDB-03, **€ 380,-**
- **1** Internal draught shield made of glass, KERN ABP-A02, **€ 165,-**
- **2** Ioniser to neutralise electrostatic charge. Suitable for all models in the ABP range. Please order together with the balance you want so that it can be fitted into the rear panel of the balance, KERN ABP-A01, **€ 1990,-**
- USB barcode scanner, hand-held version, dimensions WxDxH 152x84x63 mm, KERN PET-A09, **€ 300,-**
- Minimum weight of sample, depending on the required process accuracy, only in combination with a DAkkS calibration certificate, KERN 969-103, **€ 10,-**
- Equipment qualification: compliant qualification concept with Installation and Operating Qualification (IQ, OQ), for details see page 222
- Further details, plenty of further accessories and suitable printers see *Accessories*

Single-cell advanced technology:

- Fully automatic manufactured weighing cell from one piece of material
- Stable temperature behaviour
- Short stabilisation time: steady weight values within approx. 2 s (models with [d] = 0,1 mg), approx. 8 s (models with [d] = 0,01 mg) under laboratory conditions
- Shock proof construction
- High corner load performance

STANDARD



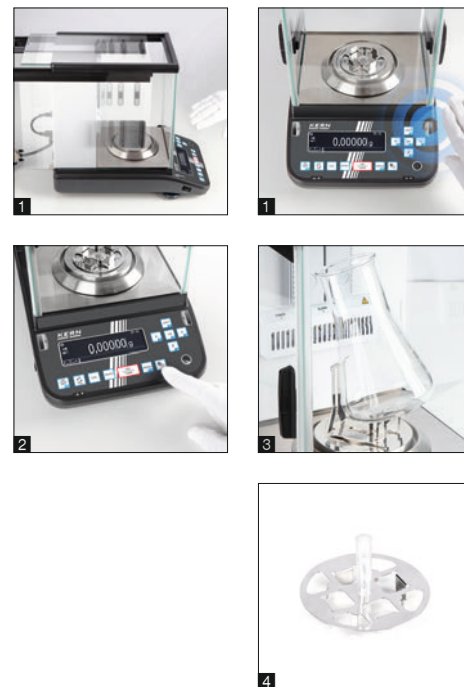
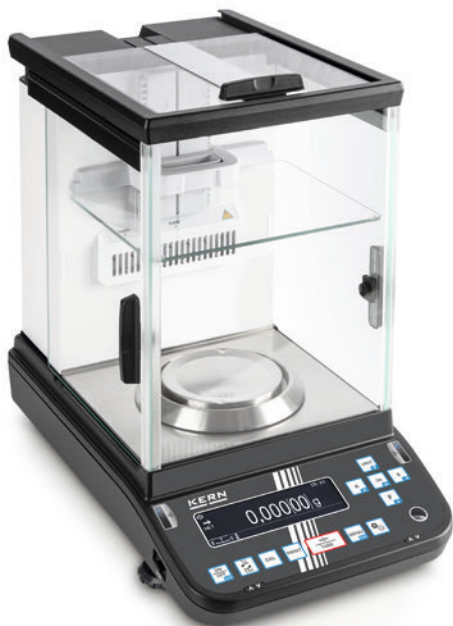
OPTION

FACTORY



Model	Weighing capacity [Max]	Readability [d]	Verification value	Minimal load	Reproducibility	Linearity	Price excl. of VAT ex works €	Options			
								Verification	€	DAkkS Calibr.	Certificate
KERN	g	mg	mg	mg	mg	mg		MT KERN	€	DAkkS KERN	€
ABP 100-5M	135	0,01	1	1	0,05	$\pm 0,1$	4200,-	965-201	150,-	963-101	200,-
ABP 200-5M	220	0,01	1	1	0,015	$\pm 0,1$	6000,-	965-201	150,-	963-101	200,-
ABP 100-4M	120	0,1	1	10	0,1	$\pm 0,2$	2200,-	965-201	150,-	963-101	200,-
ABP 200-4M	220	0,1	1	10	0,1	$\pm 0,2$	2700,-	965-201	150,-	963-101	200,-
ABP 300-4M	320	0,1	1	10	0,15	$\pm 0,3$	3000,-	965-201	150,-	963-101	200,-
Multi-division balance, with increasing or decreasing load, it switches automatically to the next largest or smallest weighing range [Max] and readout [d].											
ABP 100-5DM	52 120	0,01 0,1	1 1	1	0,02 0,1	$\pm 0,05$ 0,2	3200,-	965-201	150,-	963-101	200,-
ABP 200-5DM	102 220	0,01 0,1	1 1	1	0,05 0,1	$\pm 0,1$ 0,2	3400,-	965-201	150,-	963-101	200,-

Note: For devices that require verification (conformity assessment according to NAWI 2014/31/EU), please include the verification when placing your order. The initial verification is not possible after delivery. Please inform the full address of the location of use for the initial verification.



4

Version with automatic sliding doors and other innovative features

Features

- 1 Large glass draught shield: with 3 automatic sliding doors, which can be opened and closed using sensors, and integrated ioniser as standard. Thanks to the Memory Function, the balance stores how far the sliding doors have been opened. This prevents contamination and accelerates processes. Touching the sliding doors “gently” activates the push function and the doors open and shut automatically. Opening possible alternatively via button
- 2 Ioniser (included) can be activated at the touch of a button
- The adjustable internal draft shield minimises the effect of currents of air in the weighing space and guarantees maximum stability of the weight readings, only for 0.01 mg models of the series ABP-A

- 3 Erlenmeyer piston holder, included as standard with ABP 200-5M and ABP 200-5AM
- 4 Standard for models with [d] 0,01 mg: Multi-function weighing plate

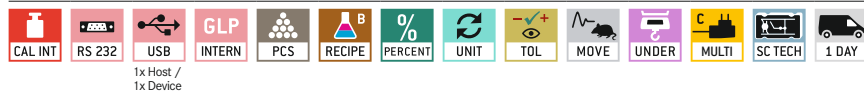
Technical data

- Luminescent OLED display, digit height 12 mm bright with high contrast, for easy reading of the weight, even in poor lighting conditions
- Dimensions weighing surface \varnothing 91 mm, stainless steel
- weighing space WxDxH 166x156x220 mm
- Overall dimensions WxDxH 220x370x350 mm
- Net weight approx. 8 kg
- Permissible ambient temperature 10 °C/30 °C

Accessories

- Protective working cover, scope of delivery 5 items, KERN YBA-A06S05, € 52,-
- Set for density determination of liquids and solids with density \leq/\geq 1, the density is indicated directly on the display, KERN YDB-03, € 380,-
- USB barcode scanner, hand-held version, dimensions WxDxH 152x84x63 mm, KERN PET-A09, € 300,-
- Minimum weight of sample, depending on the required process accuracy, only in combination with a DAkkS calibration certificate, KERN 969-103, € 10,-
- Equipment qualification: compliant qualification concept with Installation and Operating Qualification (IQ, OQ), for details see page 222

STANDARD



OPTION

FACTORY



Model	Weighing capacity [Max] g	Readability [d] mg	Verification value [e] mg	Minimal load [Min] mg	Reproducibility mg	Linearity mg	Price excl. of VAT ex works €	Options			
								Verification M D KERN	€	DAkkS Calibr. Certificate	€
ABP 100-5AM	135	0,01	1	1	0,05	$\pm 0,1$	9200,-	965-201	150,-	963-101	200,-
ABP 200-5AM	220	0,01	1	1	0,015	$\pm 0,1$	11200,-	965-201	150,-	963-101	200,-
ABP 200-4AM	220	0,1	1	10	0,1	$\pm 0,2$	5900,-	965-201	150,-	963-101	200,-
ABP 300-4AM	320	0,1	1	10	0,15	$\pm 0,3$	6400,-	965-201	150,-	963-101	200,-

Multi-division balance, with increasing or decreasing load, it switches automatically to the next largest or smallest weighing range [Max] and readout [d].

ABP 100-5DAM	52 120	0,01 0,1	1 1	1	0,02 0,1	$\pm 0,05 0,2$	6800,-	965-201	150,-	963-101	200,-
ABP 200-5DAM	102 220	0,01 0,1	1 1	1	0,05 0,1	$\pm 0,1 0,2$	9000,-	965-201	150,-	963-101	200,-

Note: For devices that require verification (conformity assessment according to NAWI 2014/31/EU), please include the verification when placing your order.

The initial verification is not possible after delivery. Please inform the full address of the location of use for the initial verification.

The oldest Precision Balance Factory in Germany

KERN & SOHN GmbH

Balances, Test Weights, Microscopes,
DAkKS Calibration Laboratory

Ziegelei 1
72336 Balingen
Germany
Tel. +49 7433 9933-0
info@kern-sohn.com
www.kern-sohn.com

Discover the multifaceted World of Balances, Microscopes and Measuring Technology from KERN online: www.kern-sohn.com

- Full KERN & SAUTER Product Range
- Convenient 24/7 Ordering
- Selection of more than 5,000 Items across Weighing and Measuring Technology, Optical Instruments as well as Accessories and Services
- Extensive Information and useful Download Options
- Technical Product Data Sheets
- Operating Instructions
- Descriptive Image and Video Material
- Useful KERN Services
- Technical Glossary
- KERN Dealer Portal
- Practical Filter and Search Functions



Follow us on our social media channels too



Printed in Germany by KERN & SOHN GmbH
z-cb-en-kr-20251

