



# BALANCE CONNECTION

## Universal integration of your measuring devices for efficient workflows

# BALANCE CONNECTION

## SOFTWARE THAT CONNECTS

Customize. Manage. Optimize.

Maximize your efficiency with flexible and universal integration of your measuring devices! Record your measurements precisely and reliably, optimize workflows, and establish a solid basis for seamless documentation and further analyses.

You will not only boost your productivity, but also enhance the quality of your processes.

### BalanceConnection at a glance

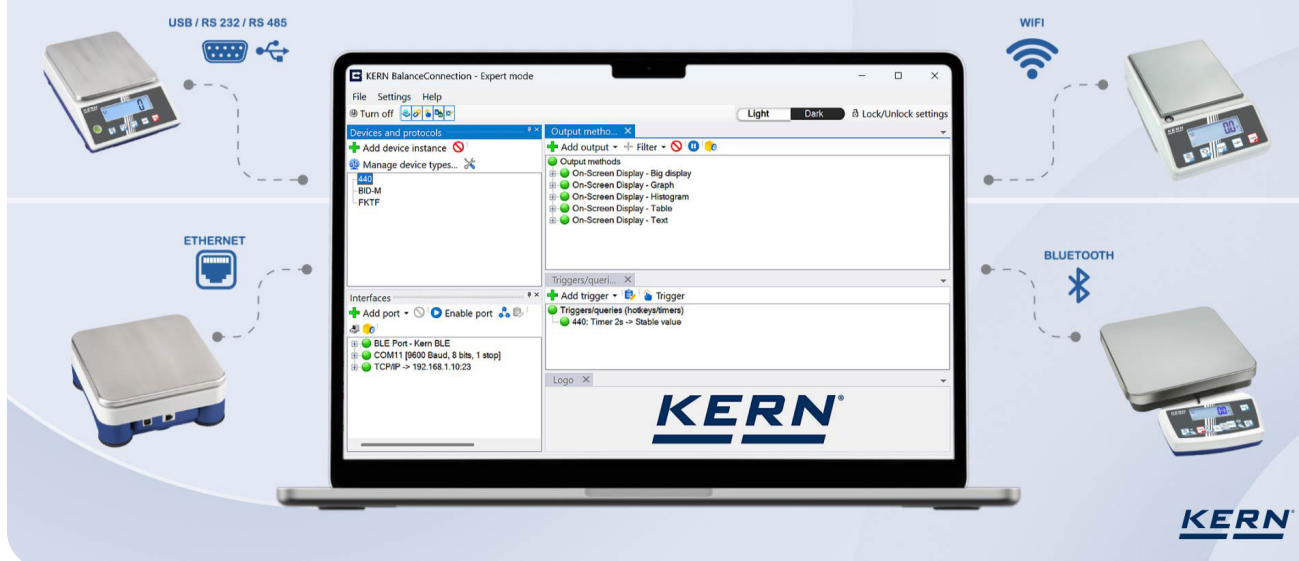
Functions and options

- **Supports multiple scales and measuring devices** with USB, RS-232, RS-485, Bluetooth, LAN or WLAN network (TCP/IP)
- **Flexible formatting and customization of the output** through freely selectable positioning and sequence, along with rounding and multiplication of measurements. You can supplement measurements with additional data such as date, time, device details, or user details and individual product information
- **Any number of devices/interfaces can be connected**, with simultaneous and synchronized recording of several measuring devices
- **Key-activated or time-controlled interrogation** of measurements or triggering of device functions, also for continuous recording
- **Interface protocols** for KERN scales are already **predefined** (standard configuration). Support for other measuring devices is possible through flexible configuration
- **Many different transfer and recording options:**
  - Microsoft Access/Word in the foreground and Excel in the background
  - Other Windows applications (via key simulation), e.g. shipping software or ERP system (SAP, Sage, ...)
  - File recording (e.g. as text or CSV file)
  - Free-form printout on text, label or even office printers
  - Execution of programs/scripts via freely definable command lines
  - Command sequences
  - Definition of conditions for specific events and the reaction to these events
  - Filter for stability recognition (configurable value storage)
  - Central configuration repository, e.g. on the network
  - On-screen displays with configurable user interface for flexible connection of measuring devices
- **Compatible with all KERN measuring devices with interfaces**
- **Measuring devices from other manufacturers can also be configured and used**
- **Additional features of the BalanceConnection PRO version:**
  - Connection to databases via ODBC (MS Access, MS SQL Server, or MySQL)
  - Transfer to HTTP web services/web forms
  - Histogram
  - Extended export options for on-screen displays (Excel, CSV, PNG, Word, PDF)

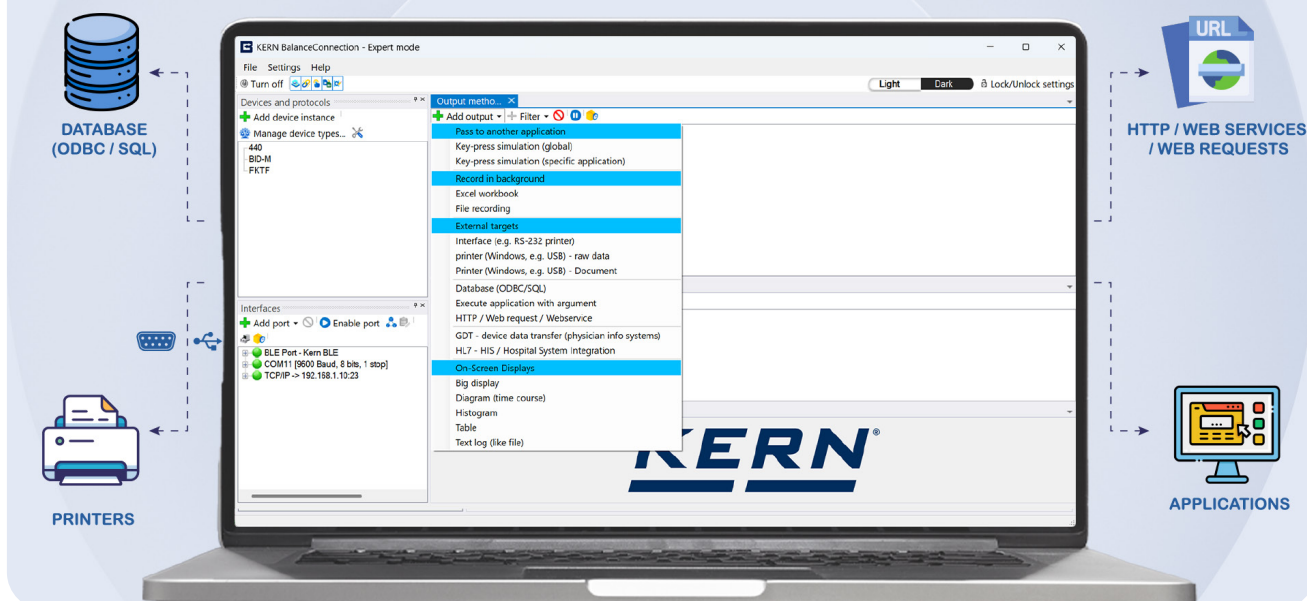
## YOUR ADVANTAGES

- Ideal software if the measurements collected should be transferred to a Windows PC
- Particularly suitable for professional integration of measuring devices into existing networks where there is a high demand for automated data transfer and further processing, and for the integration of databases
- Automatic recording, e.g. for long-term tests
- GLP-compliant lab software
- Can be used in diverse industries and applications

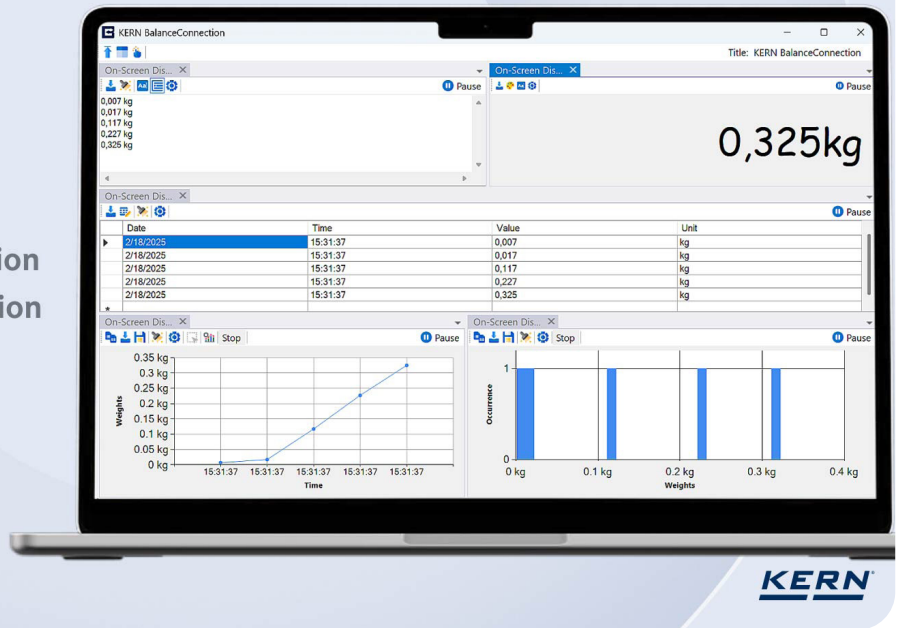
Connect any balance, anywhere, anytime  
with KERN Balance Connection, the possibilities are limitless.



The outputs can also be configured for recording  
across several external targets.



Visualize your data  
like never before.  
KERN Balance Connection  
provides a new dimension  
to your experiments.



kern-sohn.com



**Any questions about  
BalanceConnection?**

Wolfgang Schäfer  
ET Sales  
Tel. +49 7433 9933-244  
Mobil +49 170 2723266  
wolfgang.schaefer@kern-sohn.com